

# Traffic Management Plan

Josh Rosenbloom

Director of City Operations

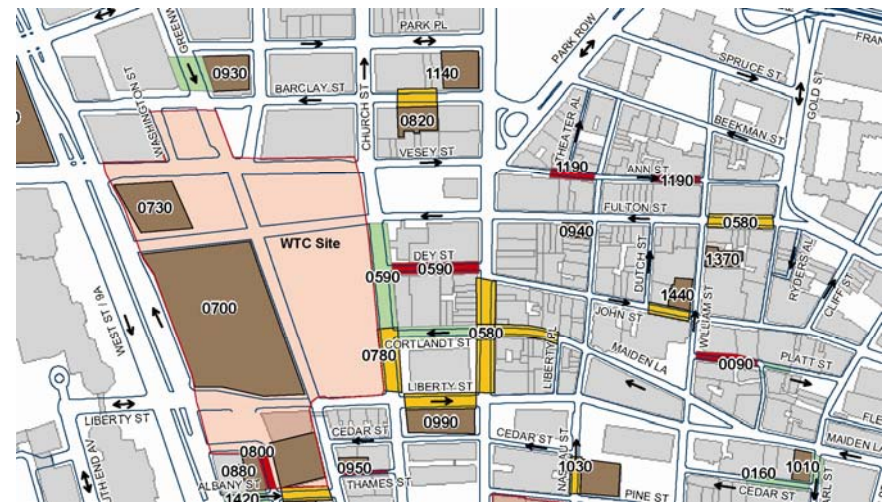
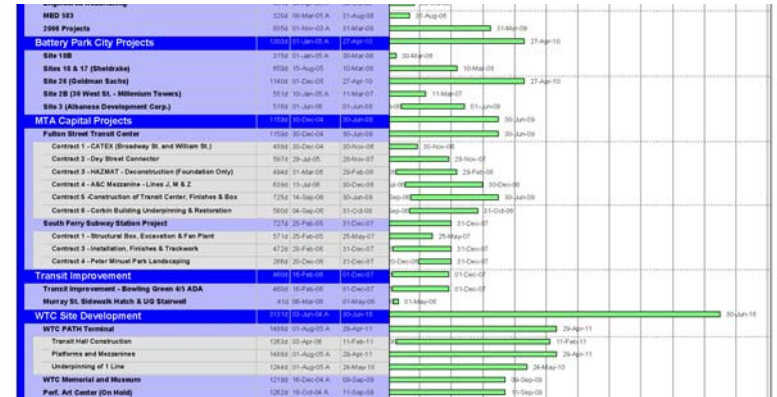


- 3 Key Components:
  - Master Schedules/MPT Plan
  - Permit Enforcement Taskforce (PET)
  - Intelligent Transportation Systems (ITS)



# Master Schedule and MPT

- Compile Master Project Schedule
- Load Project Schedule with Street Impacts
- Map Street Impacts at Any Point in Time
- Overlay Traffic Model



# Permit Enforcement Taskforce

- Membership
  - Key Members: LMCCC, DOT, NYPD, DOB
  - Other Members: DEP, Parks, DSNY, TLC, CAU
- Stationed at LMCCC
- Meet daily to review issues and deploy forces accordingly
- Access to major project sponsors downtown
- LMCCC to fund baseline personnel
- Projects to fund supplemental, project-specific personnel



# Permit Enforcement Taskforce

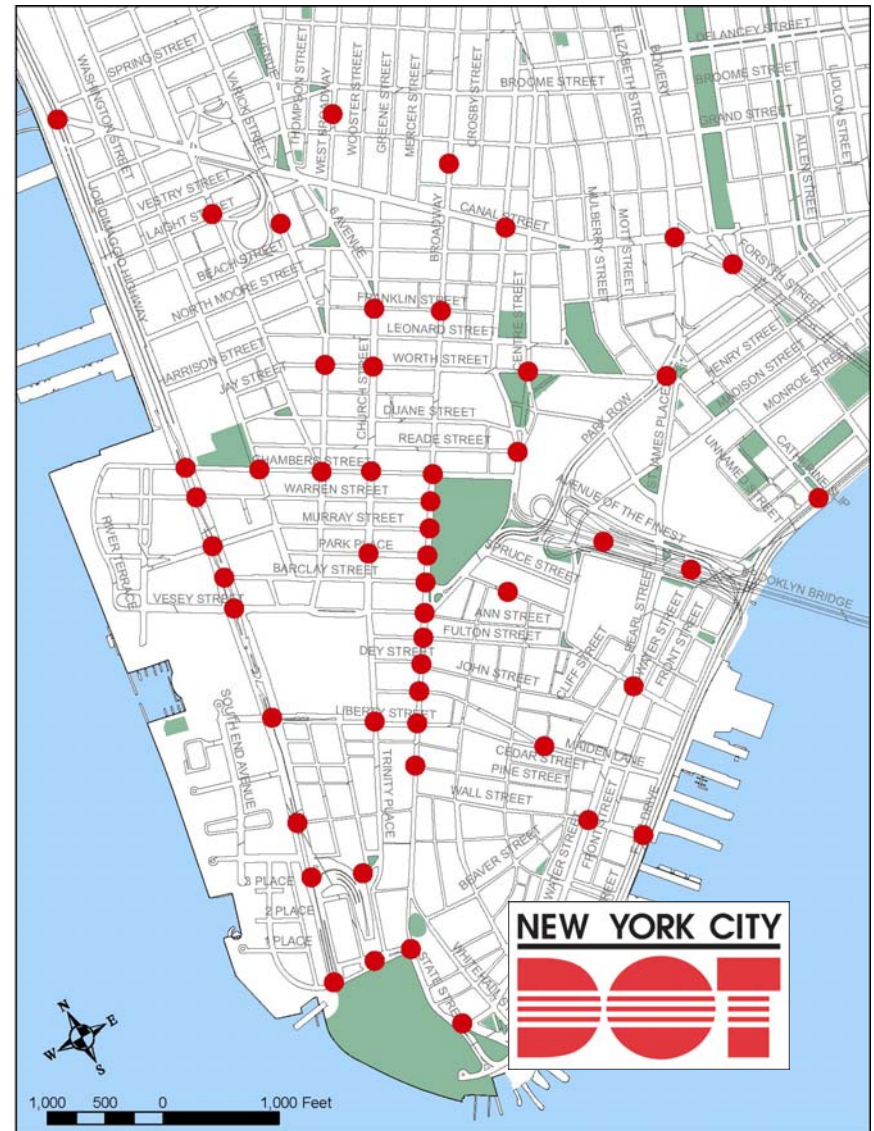
## Baseline Coverage Staff

- NYPD
  - 2 weekday shifts
  - 1 12-hour weekend shift
  - Overnight shift
  - 15 agents/shift
  - 2 tow trucks/shift
- DOT
  - Day, night and weekend shifts
  - 10 HIQA inspectors
- DOB
  - Nighttime and weekend shift
  - 6 Building inspectors



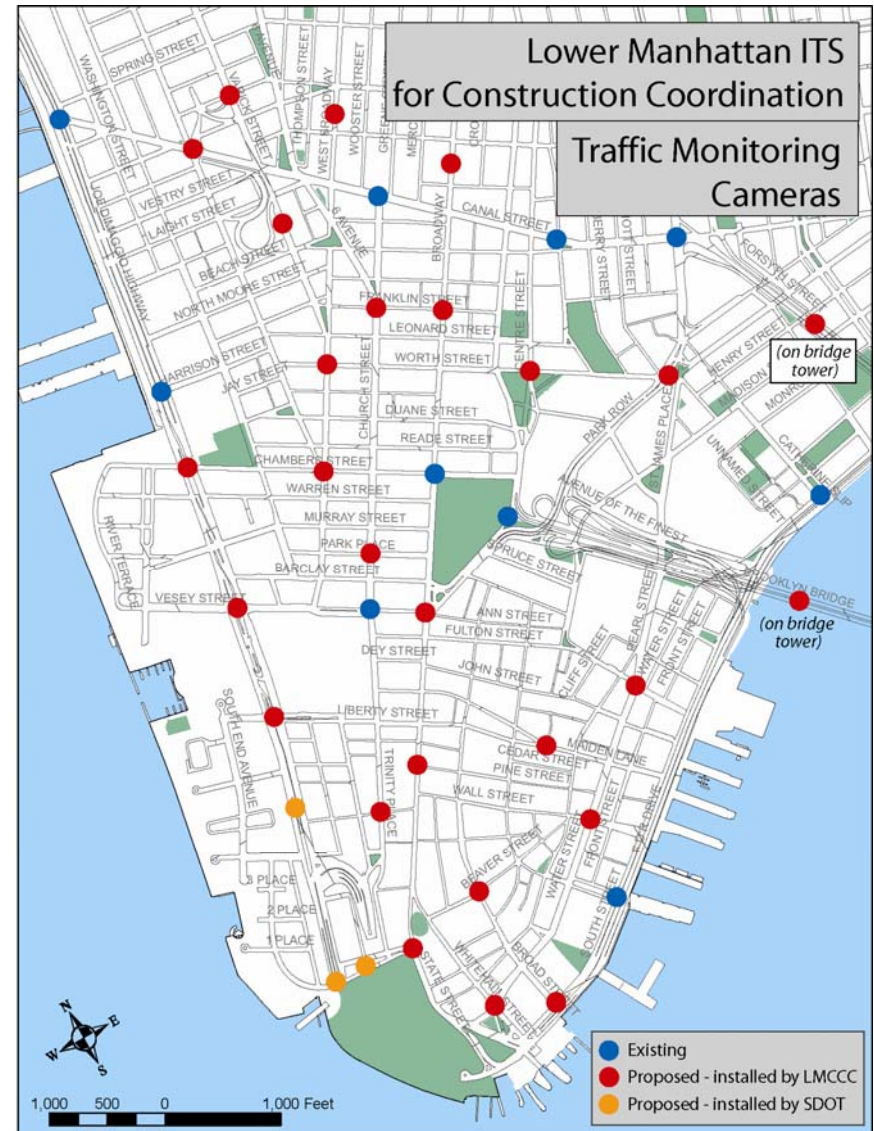
# Intelligent Transportation Systems

- Developed by DOT Traffic Operations
- Wireless technologies for maximum flexibility
- Expands upon existing citywide ITS plans
- Real-time information for enforcement agencies
- Real-time information for the public



# Intelligent Transportation Systems

- **Wireless Cameras**
  - 10 existing cameras
  - 31 proposed cameras
  - Traffic conditions can be monitored from LMCCC
  - Controlled by TMC
  - Can be relocated



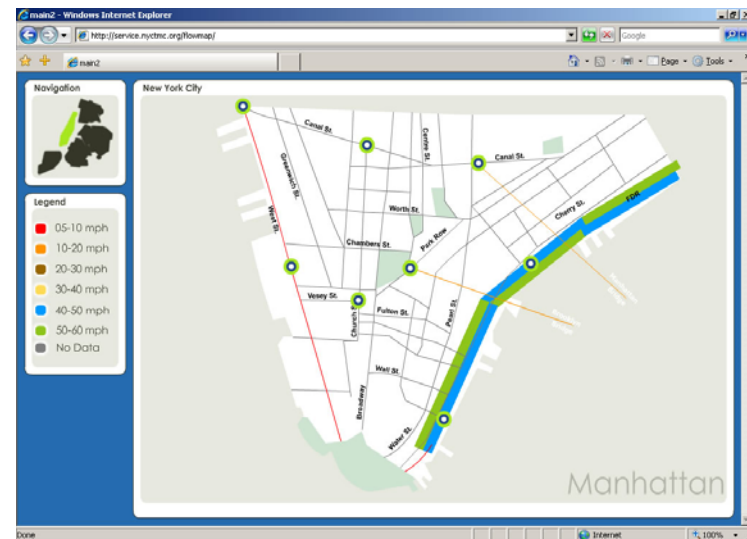
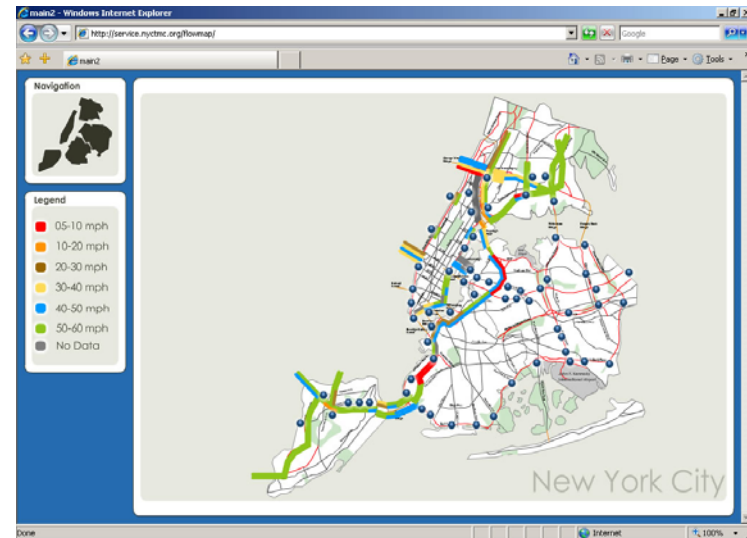
# Intelligent Transportation Systems

- Wireless Cameras
- Traffic Sensors
  - Combination of video detection and microwave technologies
  - Allows real-time flow diagrams
  - Can be relocated



# Intelligent Transportation Systems

- Wireless Cameras
- Traffic Sensors
  - Combination of video detection and microwave technologies
  - Allows real-time flow diagrams
  - Can be relocated



# Traffic Management Plan

Josh Rosenbloom

Director of City Operations

